

GTX-17 Technical Specifications

Video Production

Grass Valley HD Kayenne Elite K-Frame Switcher

160 Inputs / 96 Outputs / 9 Mix Effects

(6) Downstream Keyers per M/E

FlexiKey Programmable Clean Feed

12 iDPM / 4 eDPM / 4 Chroma Keys per Full M/E

DoubleTake

Grass Valley K2 Summit 4-Channel Clip Store

32 GB Still Store

KSP 1 M/E Soft Panel GUI

(1) **EVS 6-Channel VIA Spot Box w/ Interface & Lance Controller**

Record/Replay

(4) **12 Channel VIA EVS LSM(2 w/ SSMO Option)**

(2) **EVS X-File 3 Archive Station**

(1) **EVS Sports Net3 Hub**

(1) **CISCO 10 Gig Router**

(1) **4 Channel AJA KiPro Go USB Recorder**

**Upon Request EVS IP Director Package*

Graphics

**Upon Request*

Cameras & Accessories

(6) **Sony HDC 4300 Multi-Format Camera** **Fiber Operation Only**

(6) **Sony HDC 3500 Multi-Format Camera** **Fiber Operation Only**

(2) **Sony HDC 1500 Multi-Format Camera**

(7) **Sony HDLA Lens Adapter**

(7) **Vinten VECTOR 750 Panhead & Heavy Duty Tripods**

(3) **Vinten Dolly Wheels for Hard Cameras**

(6) **Sachtler Lightweight Tripod**

(2) **Studio Build-Up Kits for Handheld Cameras**

(7) **Fujinon 99x8.4 Studio/Field w/ Stabilization**

(2) **Fujinon 23x7.6 ENG/EFP Handheld Lens**

(2) **Fujinon 18x5.5 ENG/EFP Wide Angle Lens**

(4) **Fujinon 13x4.5 ENG/EFP Wide Angle Lens**

Mobile Unit Wired For 24 Cameras

Microphones/Speakers

(8) **Sennheiser MKH 416-P48 10" Shotgun Mics**

(1) **Sennheiser MKE 44-P Stereo Mic**

(5) **Sennheiser MD 46 Mics**

(5) **Sennheiser MKH 70 Mics**

(4) **Sony ECM 77B Lavalier Mics**

(3) **Sony ME 67 Mics**

Production Monitor Wall

Evertz VIP Routing & Multi-Image Display

(18) **32" HD LCD Monitors 16:9**

External Monitors/Converters

(3) **12" HD LCD Field Monitors 16:9**

(8) **18" HD LCD Field Monitors 16:9**

(10) **Rattlers - ST Fiber to HD/SDI**

(7) **HD/SDI to HDMI Converter**

System/Routers

Evertz Master Timecode Generator

Evertz Changeover

Evertz Magnum Control System

Evertz 538x450 Video Router w/ Embedding

288x288 AES Audio

96x192 Analog Audio

Evertz 16x16 MADI

(2) **ForA 5-Channel HD Color Correctors/Frame Sync**

(5) **AJA FS2 Frame Synchronizer/Converter**

(2) **AJA FS4 Frame Synchronizer/Converter**

(14) **Evertz 7814 Frame Sync**

(96) **Evertz DA's**

(24) **Evertz Audio Distribution**

(10) **Evertz Dual AES DA**

GTX-17 Technical Specifications

Intercom/Communications

- RTS Adam 160x160 Matrix
- (2) 64-Channel OMNEO Card
- (16) RTS KP 32 Keypanel
- (7) RTS KP 12 Keypanel
- (16) IFB Channels
- (16) RTS 4030 IFB Beltpack
- (25) RTS BP-325 Dual Channel Programmable Beltpack
- (4) RTS TIF 2000 Digital Telephone Interface
- (1) Phone System (12 Lines)
- (3) QKT
- (4) Ringdown Circuits
- (10) Single Muff Headsets
- (14) Double Muff Headsets
- (20) Lightweight Headsets
- (6) Sennheiser HMD-25 Announcer Headsets
- (6) Daltech Talkback Boxes
- (2) RTS Telex SPK 300

Fiber Booth Kit

- Calrec Hydra
- 32x32 Audio
- 8x4 Video
- (2) KP Ports
- (4) IFB Channel
- (4) Dual Channel PLs

Lighting

*Upon Request

Audio

- Calrec Artemis Beam Digital Console V8
- (64) Multi-layer faders w/Hydra2 Networking LCD Bar Graph and VU Metering
- (4) MAD1 Interface – 4 External Streams
- 64x64 Dante Audio
- 96x96 AES Audio
- 128x128 Analog Audio
- Dual Processor Engines
- (10) Embedders/De-Embedders
- Yamaha SPX2000 Multi-Effects Processor
- (2) Rane Audio Delays
- (3) dbx 166 XL Compressors
- (2) dbx 1046 Quad Compressors
- (2) 360 Systems Digicart/E Ethernet Audio
- (1) CD Player
- (1) DTS Neural Loudness Meter
- (2) DTS Neural Upmix Decoders
- (2) DTS Neural Downmix Encoders
- (2) DTS Neural Mono to Stereo 4-Channel Synthesizers
- Genelec 5.1 Surround Sound Monitoring
- DK Stereo Surround Audio Display
- RTW Stereo Surround Audio Display
- *Hydra Stage Boxes Upon Request*

Cable

- 7000' SMPTE (Additional Upon Request)
- 2500' DT 12 Audio Mults
- 2000' Coax Video (Various Lengths)
- 1500' Single Audio (Various Lengths)
- 5-Pair Coax Mults (Various Lengths)
- 10-Pair Coax Mults (Various Lengths)
- 5000' TAC 12 (Various Lengths)

Power Requirements

- 3-Phase, 208 Volt, 400 Amps
- 200 Amp Environmental, 200 Amp Technical
- Maximum Distance From Power Panel: 150'

A-Unit Dimensions (Expanded)

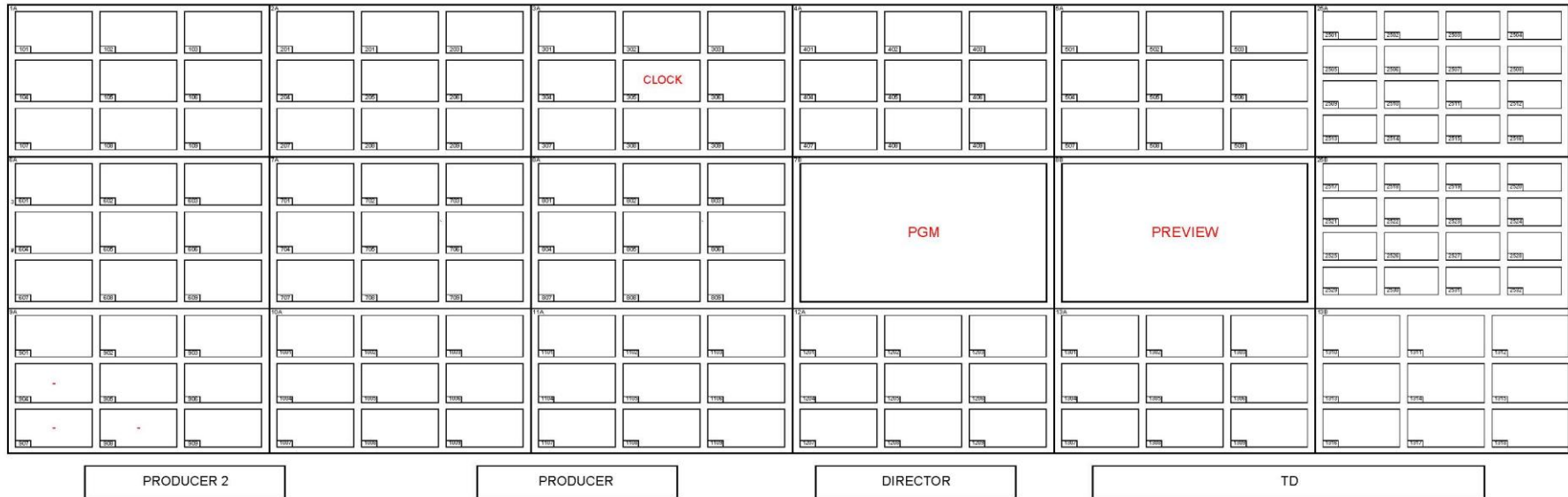
- W/ Tractor: 74' L x 13'6" H x 16' W
- W/O Tractor: 56' L x 13'6" H x 16' W
- Working Footprint: +5' Around
- Expands: Curb Side and Street Side

B-Unit Dimensions

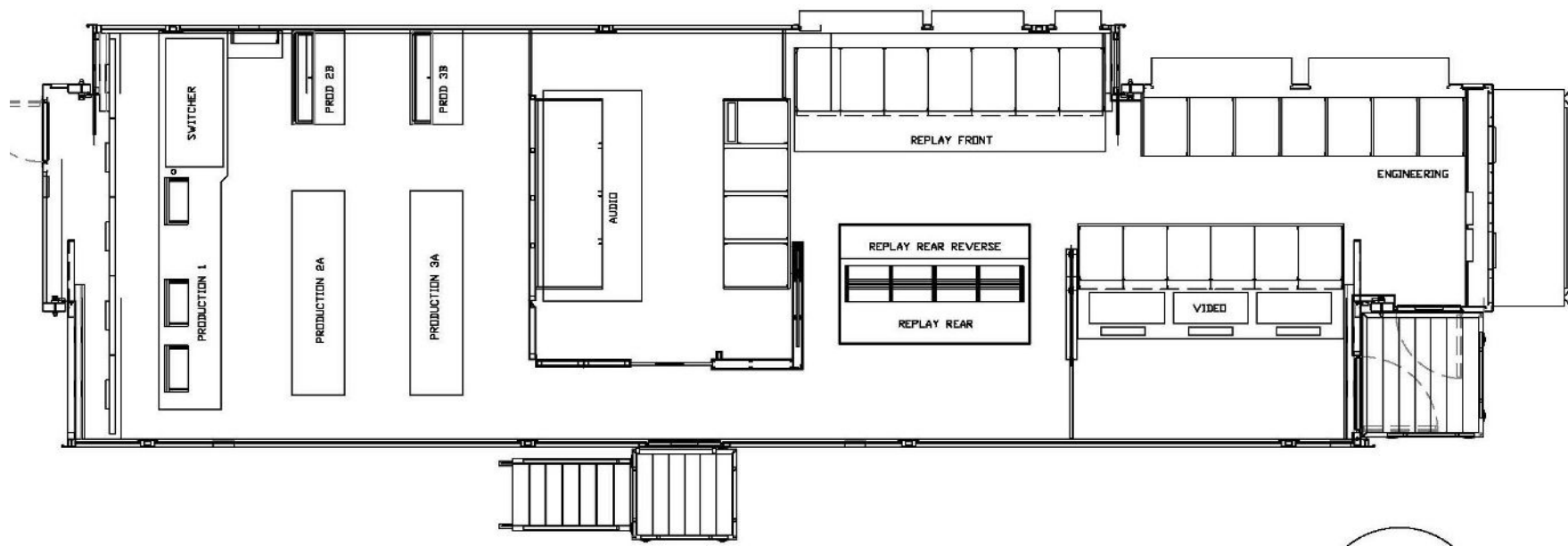
- W/ Tractor: 71' L x 13'6" H x 8'6" W
- W/O Tractor: 55' L x 13'6" H x 8'6" W
- Working Footprint: +5' Around

**Equipment on this specs sheet is subject to change without notice*

GTX-17 Technical Specifications



GTX-17 Technical Specifications



GTX-17 Technical Specifications

B-17: Required with GTX-17

