

# GTX-16 Technical Specifications

## Video Production

### **Grass Valley HD Kayenne Elite K-Frame Switcher**

128 Inputs / 64 Outputs / 9 Mix Effects

(6) Downstream Keyers per M/E

FlexiKey Programmable Clean Feed

12 iDPM / 4 eDPM / 4 Chroma Keys per Full M/E

DoubleTake

### **Grass Valley K2 Summit 4-Channel Clip Store**

#### **32 GB Still Store**

KSP 1 M/E Soft Panel GUI

(1) 4 Channel XS SpotBox w/ Interface & Lance Controller

## Record/Replay

(4) EVS XT4K 12-Channel LSM (w/SSMO Option)

(2) EVS X-File 3 Archive Station

(1) EVS Sports Net3 Hub

(1) CISCO 10 Gig Router

(1) 4 Channel AJA KiPro Go USB Recorder

*\*Upon Request EVS IP Director Package*

## Graphics

*\*Upon Request*

## Cameras & Accessories

(10) Sony HDC 2500 Multi-Format Camera

(1) Sony HDC 4300 Multi-Format Camera Fiber Operation Only

(2) Sony HDC 1500R Multi-Format Camera

(6) Sony HDLA Lens Adapter

(10) HDFX/TX Triax to SMPTE Converters

(7) Vinten VECTOR 750 Panhead & Heavy Duty Tripods

(3) Vinten Dolly Wheels for Hard Cameras

(3) Studio Build-Up Kits for Handheld Cameras

(5) Fujinon 101x8.9 Studio/Field w/stabilization

(2) Fujinon 88x8.8 Studio/Field w/stabilization

(2) Fujinon 22x7.6 ENG/EFP Handheld Lenses

(1) Fujinon 14X4.5 ENG/EFP Wide Angle Lenses

(3) Fujinon 13X4.5 ENG/EFP Wide Angle Lenses

(2) Fujinon 12X4.5 ENG/EFP Wide Angle Lenses

*Mobile Unit Wired For 24 Cameras*

## Microphones/Speakers

(5) Sennheiser ME 67MP Shotgun Mics

(8) Sennheiser MKH 416-P48 10" Shotgun Mics

(1) Sennheiser MKE 44-P Stereo Mic

(8) Sennheiser MD 46 Mics

(3) Sennheiser MKH 70 Mics

(4) Electro-Voice 635A Stick Mics

(5) Sony ECM 77B Lavalier Mics

## Production Monitor Wall

### **Evertz VIP Routing & Multi-Image Display**

(18) 32" HD LCD Monitors 16:9

## External Monitors/Converters

(4) 8" HD LCD Field Monitors 16:9

(8) 18.5" Ikegami ULE-185U HD/SDI Monitors

(6) Rattlers - ST Fiber to HD/SDI

(4) HD/SDI to HDMI Converter

## System/Routers

Evertz Master Timecode Generator

Evertz Changeover

Evertz Magnum Control System

Evertz 288x576 Video Router w/Embedding

192x144 AES Audio

48x96 Analog Audio

(1) CyanView FS Interface

(1) ForA 5-Channel HD Color Correctors/Frame Sync

(10) AJA FS2 Frame Synchronizer/Converter

(5) AJA FS4 Frame Synchronizer/Converter

# GTX-16 Technical Specifications

## Intercom/Communications

- RTS Adam 128x128 Matrix
- (2) 64-Channel OMNEO Card
- (16) RTS KP 32 Keypanel
- (7) RTS KP 12 Keypanel
- (16) IFB Channels
- (28) RTS BP-325 Dual Channel Programmable Beltpack
- (12) RTS 4030 IFB Beltpack
- (4) RTS TIF 2000 Digital Telephone Interface
- (1) Phone System (12 Lines)
- (3) QKT
- (4) Ringdown Circuits
- (6) Motorola 2-Way Radios w/ 2 Base Stations
- (20) Single Muff Headsets
- (14) Double Muff Headsets
- (20) Lightweight Headsets
- (3) Sennheiser HMD-25 Announcer Headsets
- (3) Sennheiser HMD-26 Announcer Headsets
- (6) Daltech Talkback Boxes
- (2) RTS Telex SPK 300

## Fiber Booth Kit

- Calrec Hydra
- 32x32 Audio
- 8x4 Video
- (4) IFB Channels
- (4) Dual Channel PLs
- 612 SAP Intercom

## Audio

- Calrec Artemis Beam Digital Console V8
- (64) Faders w/ Hydra2
- LCD Bar Graph and VU Metering
- MADI Interface – 2-Ext. Streams
- 128x128 AES Audio
- 128x128 Analog Audio
- (16) Evertz Dual AES Audio DA
- (30) Evertz Analog Audio DA
- Dual Processor Engines
- Yamaha SPX2000 Multi-Effects Processor
- (2) Rane Audio Delays
- (3) dbx 166 XL Compressors
- (2) dbx 1046 Quad Compressors
- (1) 360 Systems DigiCart E w/ GPI (1 w/ SD Card Reader)
- (1) 360 Systems DigiCart II w/ ZipDrives
- ENCO EDAD Digital Audio Server
- (1) CD Player
- (1) DTS Neural Loudness Meter
- (2) DTS Neural Upmix Decoders
- (2) DTS Neural Downmix Encoders
- (1) DTS Neural Mono to Stereo 4-Channel Synthesizers
- Genelec 5.1 Surround Sound Monitoring
- RTW Stereo Surround Audio Display
- \*Hydra Stage Boxes Upon Request*

## Cable

- 5000' Tac-12 (Various Lengths)
- 9500' SMPTE (Various Lengths)
- 5000' Triax (Additional Upon Request)
- 3300' DT 12 Audio Mults
- 2000' Coax Video (Various Lengths)
- 1500' Single Audio (Various Lengths)
- 5-Pair Coax Mults (Various Lengths)
- 10-Pair Coax Mults (Various Lengths)

## Power Requirements

- 3-Phase
- 208 Volt
- 400 Amps
- 200 Amp Environmental
- 200 Amp Technical
- Maximum Distance From Power Panel: 150'

## A-Unit Dimensions (Expanded)

- W/ Tractor: 74' L x 13'6" H x 16' W
- W/O Tractor: 56' L x 13'6" H x 16' W
- Working Footprint: +5' Around
- Expands: Curb Side and Street Side

## B-Unit Dimensions

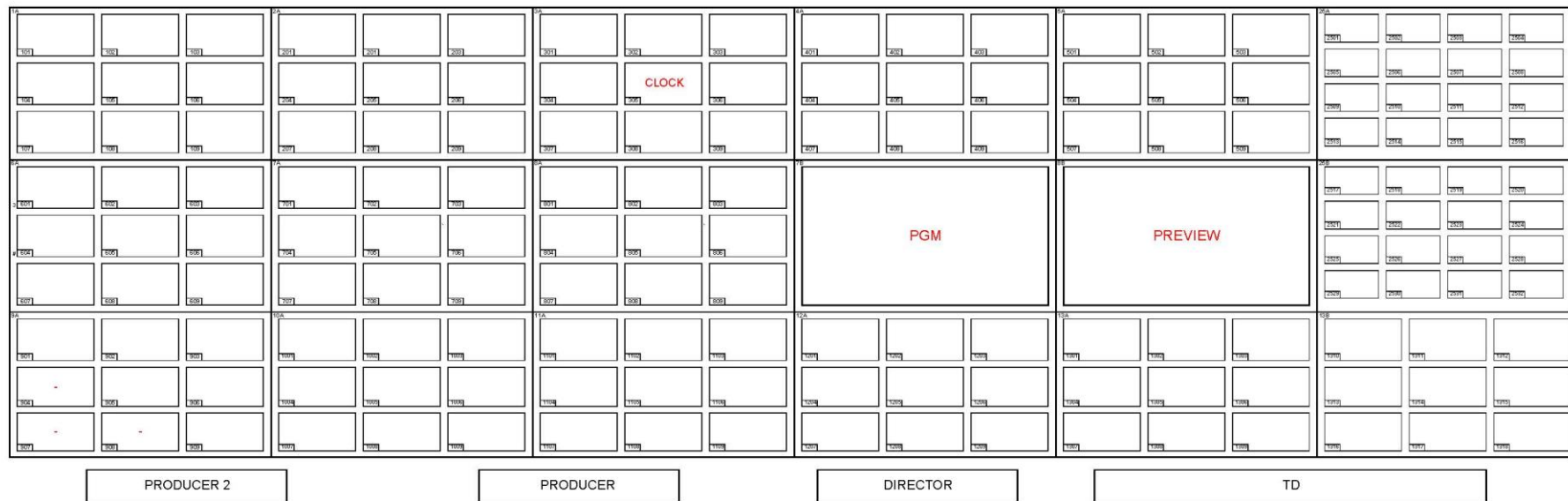
- W/ Tractor: 71' L x 13'6" H x 8'6" W
- W/O Tractor: 55' L x 13'6" H x 8'6" W
- Working Footprint: +5' Around

*\*Equipment on this spec sheet is subject to change without notice*

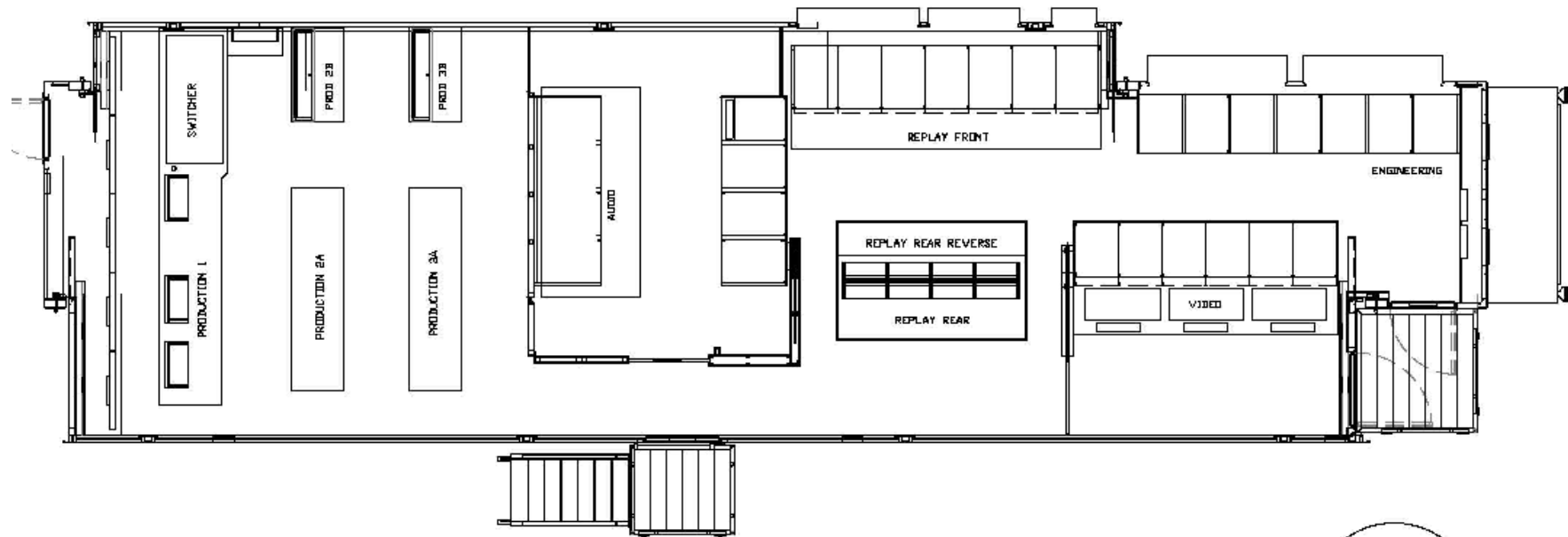
## F&F PRODUCTIONS, LLC

14333 Myerlake Circle | Clearwater, FL 33760 | (727) 530-5000 | info@fandfhd.tv

# GTX-16 Technical Specifications



# GTX-16 Technical Specifications



# GTX-16 Technical Specifications

B-16: Required with GTX-16

