

# GTX-12 Technical Specifications

## Video Production

**Grass Valley HD Kayenne Elite K Frame Switcher**  
96 Inputs / 48 Outputs / 4.5 Mix Effects  
(6) Downstream Keyers per M/E  
FlexiKey Programmable Clean Feed  
12 iDPM / 4 eDPM / 4 Chroma Keys per Full M/E  
DoubleTake  
**Grass Valley K2 Summit 4-Channel Clip Store**  
**Grass Valley Jupiter Grass Valley Trinitix 256x256**  
**HD/SDI Router**  
**32 GB Still Store**  
(1) 4 Channel EVS XT3 Spot Box w/ Interface & Lance Controller

## Record/Replay

(4) EVS XT3 8-Channel LSM  
(4) DNF Slow Motion Controllers  
(1) EVS X-File 3 Archive Station  
(1) EVS Sports Net2 Hub  
*\*Upon Request EVS IP Director Package*

## Graphics

*\*Upon Request*

## Cameras & Accessories

(8) **Sony HDC 2500 Multi-Format Camera**  
(4) **Sony HDC 1500 Multi-Format Camera**  
*\*\*Super Slow Mo available upon request\*\**  
(7) **Sony HDLA Lens Adapters**  
(12) **HDFX/TX Triax to SMPTE Converters**  
(7) **Vinten VECTOR 700 Panhead & Heavy Duty Tripods**  
(2) **Vinten Dolly Wheels for Hard Cameras**  
(2) **Studio Build-Up Kits for Handheld Cameras**  
(5) **Fujinon 101x8.9 Studio/Field w/stabilization**  
(2) **Fujinon 88x9.3 Studio/Field w/stabilization**  
(2) **Fujinon 22x7.8 ENG/EFP Handheld Lenses**  
(2) **Fujinon 13X4.5 ENG/EFP Wide Angle Lenses**  
(2) **Fujinon 12x4.5 ENG/EFP Wide Angle Lenses**  
*Mobile Unit Wired For 18 Cameras*

## Microphones/Speakers

(6) **Sennheiser ME 67MP Shotgun Mics**  
(6) **Sennheiser MKH 416-P48 10" Shotgun Mics**  
(1) **Sennheiser MKE 44-P Stereo Mic**  
(5) **Sennheiser MD 46 Mics**  
(3) **Sennheiser MKH 70 Mics**  
(7) **Electro-Voice 635A Stick Mics**  
(9) **Sony ECM 77B Lavalier Mics**  
(6) **Fostex 6301N Throwdown Speakers**

## Production Monitor Wall

**Evertz VIP Routing & Multi-Image Display**  
(15) **32" HD LCD Monitors 16:9**  
(3) **37" HD LCD Monitors 16:9**  
(3) **42" HD LCD Monitors 16:9**

## External Monitors/Converters

(4) **10" HD LCD Field Monitors 16:9**  
(5) **19" HD LCD Field Monitors 16:9**  
(10) **Rattlers - ST Fiber to HD/SDI**  
(4) **HD/SDI to HDMI Converter**

## System/Routers

**Evertz Master Timecode Generator**  
**Black Magic 72x72 RouterCM-3000 Control System**  
**Grass Valley Concerto 224x224 Stereo Router**  
96x96 AES Audio  
128x128 Analog Audio  
(24) **Benchmark Stereo Analog DA's**  
(8) **Benchmark 4-Channel AES DA's**  
(2) **Cobalt HD Color Corrector**  
(5) **ForA 5-Channel HD Color Correctors/Frame Sync**  
(6) **AJA FS1 Frame Synchronizer/Converter**  
(5) **AJA FS2 Frame Synchronizer/Converter**  
(1) **DSS Receiver**  
**QAM Digital Demodulator**  
(2) **Evertz 16-Channel Embedders**

# GTX-12 Technical Specifications

## Intercom/Communications

- RTS Adam 112x112 Matrix
- (10) RTS KP 32 Keypanel
- (9) RTS KP 12 Keypanel
- (16) IFB Channels
- (22) RTS BP-325 Dual Channel Programmable Beltpack
- (11) RTS 4030 IFB Beltpack
- (4) RTS TIF 2000 Digital Telephone Interface
- (1) Phone System (12 Lines)
- (3) QKT
- (4) Ringdown Circuits
- (6) Motorola 2-Way Radios w/ 2 Base Stations
- (20) Single Muff Headsets
- (14) Double Muff Headsets
- (20) Lightweight Headsets
- (6) Sennheiser HMD-25 Announcer Headsets
- (6) Daltech Talkback Boxes
- (2) RTS Telex SPK 300

## Fiber Booth Kit

- Telecast Adder II
- (64) Configurable Audio Channels
- (4) Data Channels (Bi-directional 4 x 16)
- Telecast Viper II
- (6) HD/SDI
- (1) Analog NTSC

## Audio

- Calrec Artemis Beam Digital Console V8 w/High Density Blue Fin2
- (56) Faders w/ Hydra2
- LCD Bar Graph and VU Metering
- MADI Interface – 2-Streams
- 64x64 AES Audio
- Dual Processor Engines
- Yamaha SPX2000 Multi-Effects Processor
- (2) Rane Audio Delays
- (3) dbx 166 XL Compressors
- (1) dbx 1046 Quad Compressors
- (2) 360 Systems DigiCart II w/ ZipDrives
- (1) CD Player
- (10) AES DA
- (1) DTS Neural Loudness Meter
- (2) DTS Neural Upmix Decoders
- (2) DTS Neural Downmix Encoders
- (2) DTS Neural Mono to Stereo 4-Channel Synthesizers
- Genelec 5.1 Surround Sound Monitoring
- DK Stereo Surround Audio Display
- \*Upon Request 96 Channel Hydra Stage Box*

## Lighting

- (1) Lowell Light Kits w/ 4 Instruments each

## Cable

- 5000' Triax
- 3000' DT 12 Audio Mults
- 2000' Coax Video (Various Lengths)
- 2500' Single Audio (Various Lengths)
- 5-Pair Coax Mults (Various Lengths)
- 10-Pair Coax Mults (Various Lengths)

## Power Requirements

- 3-Phase
- 208 Volt
- 400 Amps
- 200 Amp Environmental
- 200 Amp Technical
- Maximum Distance From Power Panel: 150'

## Dimensions (Expanded)

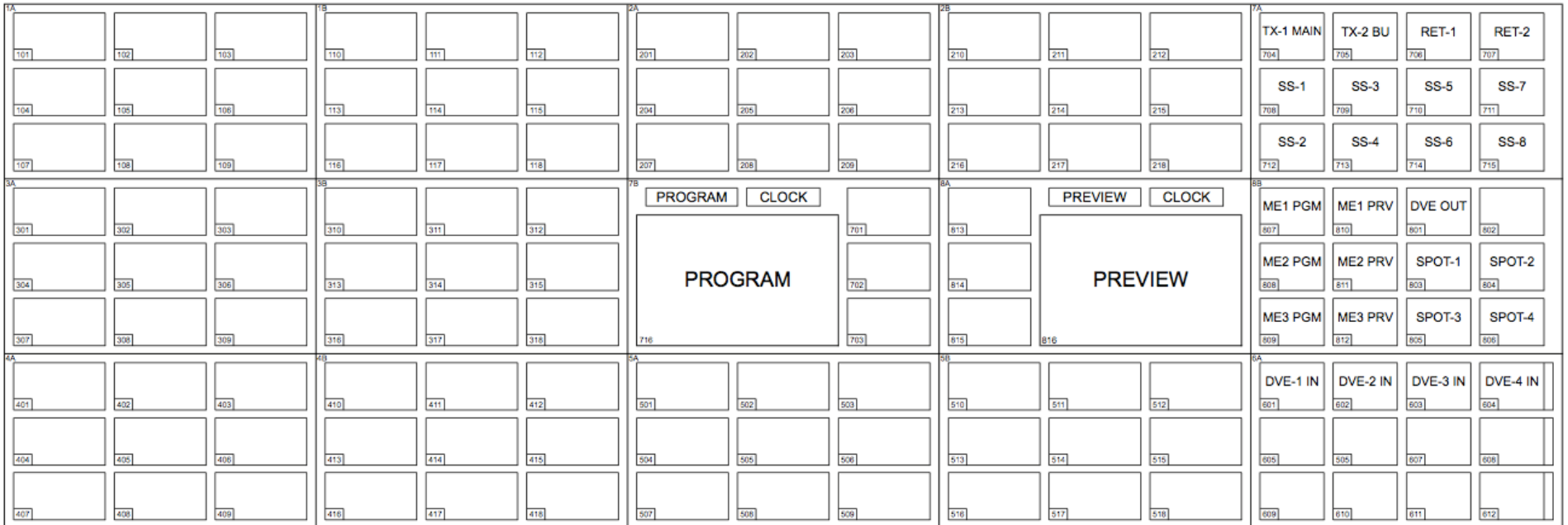
- W/ Tractor: 74' L x 13'6" H x 13'5" W
- W/O Tractor: 56' L x 13'6" H x 13'5" W
- Working Footprint: +5' Around
- Expands: Curb Side

## B-Unit (Optional Upon Request)

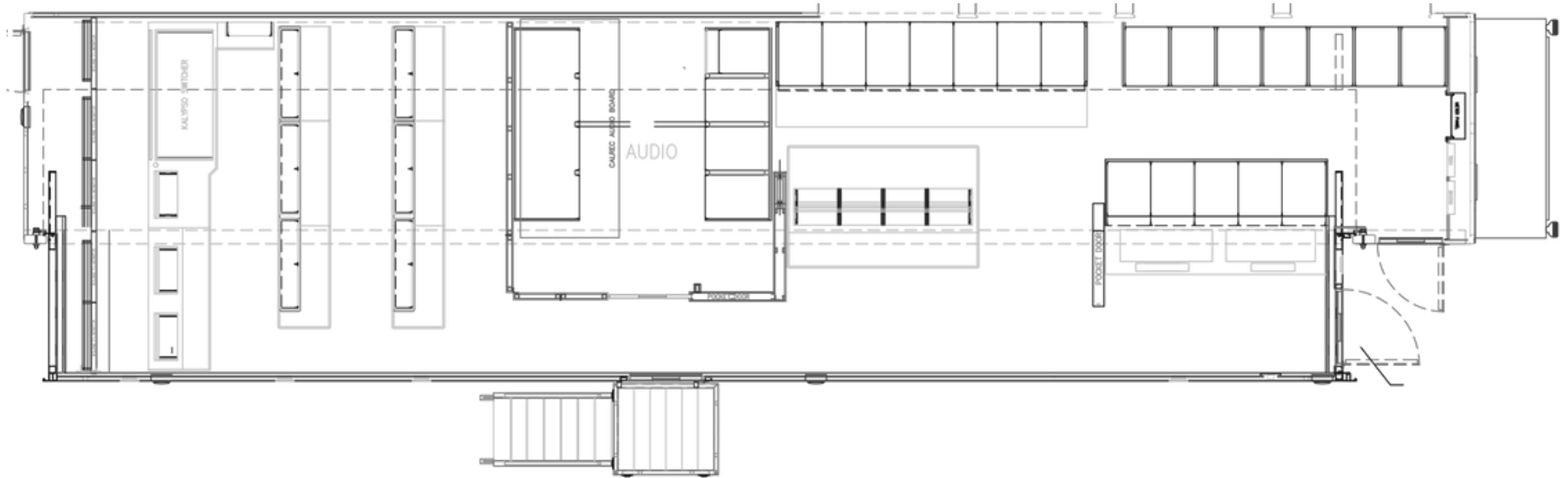
- W/ Tractor: 71' L x 13'6" H x 8'6" W
- W/O Tractor: 53' L x 13'6" H x 8'6" W
- Working Footprint: +5' Around

*\*Upon Request  
Closed Captioning Device  
Telestrator*

# GTX-12 Technical Specifications



# GTX-12 Technical Specifications



# GTX-12 Technical Specifications

B-12: Optional with GTX-12

