

GTX-14 Technical Specifications

Video Production

Grass Valley HD Kayenne Elite K-Frame Switcher
96 Inputs / 48 Outputs / 6 Mix Effects
(6) Downstream Keyers per M/E
FlexiKey Programmable Clean Feed
12 iDPM / 4 eDPM / 4 Chroma Keys per Full M/E
DoubleTake
Grass Valley K2 Summit 4- Channel Clip Store
NVision 288x576 HD/SD Router
32 GB Still Store
(1) EVS XT2 Spot Box w/ Interface & Lance Controller

Record/Replay

(4) EVS XT3 8-Channel LSM
(3) DNF Slow Motion Controllers
(1) EVS X-File 3 Archive Station
(1) EVS Sports Net2 Hub
(2) Panasonic AJ-HD1700 DVCPPro
(4) DVD SD Recorder/Players
**Upon Request EVS IP Director Package*

Graphics

Chyron HyperX3 w/ Keyboard

Cameras & Accessories

(12) Sony HDC 1500 Multi-Format Camera
(7) Sony HDLA Lens Adapter
(12) HDFX/TX Triax to SMPTE Converters
(7) Vinten VECTOR 700 Panhead & Heavy Duty Tripods
(1) Vinten Dolly Wheels for Hard Cameras
(2) Sachtler Lightweight Tripod
(2) Studio Build-Up Kits for Handheld Cameras
(3) Fujinon 101x8.9 Studio/Field w/stabilization
(4) Fujinon 87x9.3 Studio/Field w/stabilization
(4) Fujinon 22x7.8 ENG/EFP Handheld Lenses
(2) Fujinon 13X4.5 ENG/EFP Wide Angle Lenses
Mobile Unit Wired For 16 Cameras

Microphones/Speakers

(6) Sennheiser ME 67MP Shotgun Mics
(7) Sennheiser MKH 416-P48 10" Shotgun Mics
(1) Sennheiser MKE 44-P Stereo Mic
(4) Sennheiser MD 46 Mics
(2) Sennheiser MKH 70 Mics
(6) Electro-Voice 635A Stick Mics
(5) Sony ECM 77B Lavalier Mics
(6) Fostex 6301N Throwdown Speakers

Production Monitor Wall

Evertz VIP Routing & Multi-Image Display
(15) 32" HD LCD Monitors 16:9
(6) 42" HD LCD Monitors 16:9

External Monitors/Converters

(5) 10" Marshall HD/SDI Monitors
(3) 13" HD LCD Field Monitors 16:9
(2) 19" HD LCD Field Monitors 16:9
(2) 21" HD LCD Field Monitors 16:9
(5) Rattlers - ST Fiber to HD/SDI
(4) HD/SDI to HDMI Converter

System/Routers

Evertz Master Timecode Generator
Grass Valley Jupiter CM-3000 Control System
Grass Valley Concerto 192x192 Stereo Router
64x64 AES Audio
128x128 Analog Audio
(24) Benchmark Stereo Analog DA's
(8) Benchmark 4-Channel AES DA's
(1) Cobalt HD Color Corrector
(1) ForA 5-Channel HD Color Correctors/Frame Sync
(5) AJA FS1 Frame Synchronizer/Converter
(5) AJA FS2 Frame Synchronizer/Converter
(80) AJA HD-SDI Down Converter
(1) DSS Receiver
QAM Digital Demodulator
(2) Evertz 16-Channel Embedders

GTX-14 Technical Specifications

Intercom/Communications

- RTS Adam 112x112 Matrix
- (15) RTS KP 32 Keypanel
- (6) RTS KP 12 Keypanel
- (16) IFB Channels
- (25) RTS BP-325 Dual Channel Programmable Beltpack
- (8) RTS 4030 IFB Beltpack
- (4) RTS TIF 2000 Digital Telephone Interface
- (1) Phone System (12 Lines)
- (3) QKT
- (4) Ringdown Circuits
- (6) Motorola 2-Way Radios w/ 2 Base Stations
- (20) Single Muff Headsets
- (14) Double Muff Headsets
- (20) Lightweight Headsets
- (2) Sennheiser HMD-25 Announcer Headsets
- (4) Sennheiser HMD-26 Announcer Headsets
- (5) Daltech Talkback Boxes
- (2) RTS Telex SPK 300

Fiber Booth Kit

- Calrec Hydra
- 32x32 Audio
- 4x10 HD/SDI
- (2) KP Ports
- (2) 10/100/1G-LAN
- (2) Router Controls

Audio

- Calrec Artemis Beam Digital Console V8 w/High Density Blue Fin2
- (56) Faders w/ Hydra2
- LCD Bar Graph and VU Metering
- MADI Interface – 2-Streams
- 96x96 AES Audio
- 96x96 Analog Audio
- Dual Processor Engines
- Yamaha SPX2000 Multi-Effects Processor
- (2) Rane Audio Delays
- (2) dbx 166 XL Compressors
- (1) dbx 1046 Quad Compressors
- (2) 360 Systems DigiCart II w/ ZipDrives
- (1) CD Player
- (1) DTS Neural Loudness Meter
- (2) DTS Neural Upmix Decoders
- (2) DTS Neural Downmix Encoders
- (2) DTS Neural Mono to Stereo 4-Channel Synthesizers
- Genelec 5.1 Surround Sound Monitoring
- DK Stereo Surround Audio Display
- *Upon Request 96 Channel Hydra Stage Box*

Lighting

- (2) Lowell Light Kits w/ 4 Instruments each

Cable

- 5000' Triax
- 3000' DT 12 Audio Mults
- 2000' Coax Video (Various Lengths)
- 2500' Single Audio (Various Lengths)
- 5-Pair Coax Mults (Various Lengths)
- 10-Pair Coax Mults (Various Lengths)

Power Requirements

- 3-Phase
- 208 Volt
- 400 Amps
- 200 Amp Environmental
- 200 Amp Technical
- Maximum Distance From Power Panel: 150'

Dimensions (Expanded)

- W/ Tractor: 74' L x 13'6" H x 13'5" W
- W/O Tractor: 56' L x 13'6" H x 13'5" W
- Working Footprint: +5' Around
- Expands: Curb Side

B-Unit (Optional Upon Request)

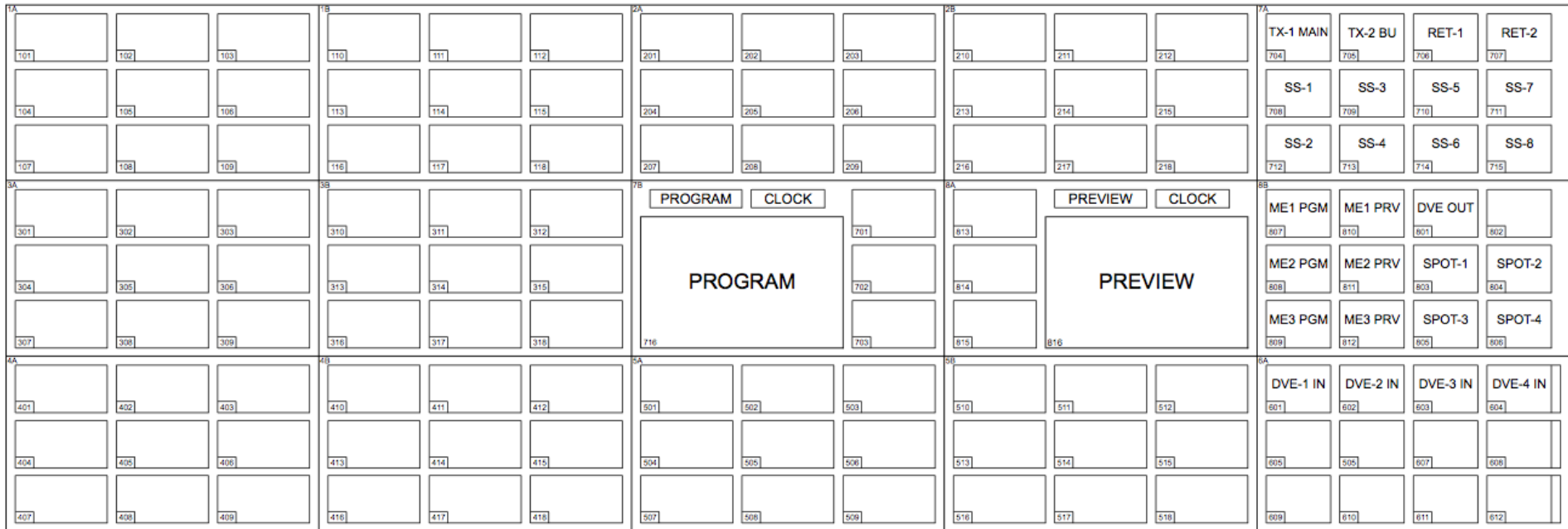
- W/ Tractor: 71' L x 13'6" H x 8'6" W
- W/O Tractor: 53' L x 13'6" H x 8'6" W
- Working Footprint: +5' Around

**Upon Request
Closed Captioning Device
Telestrator*

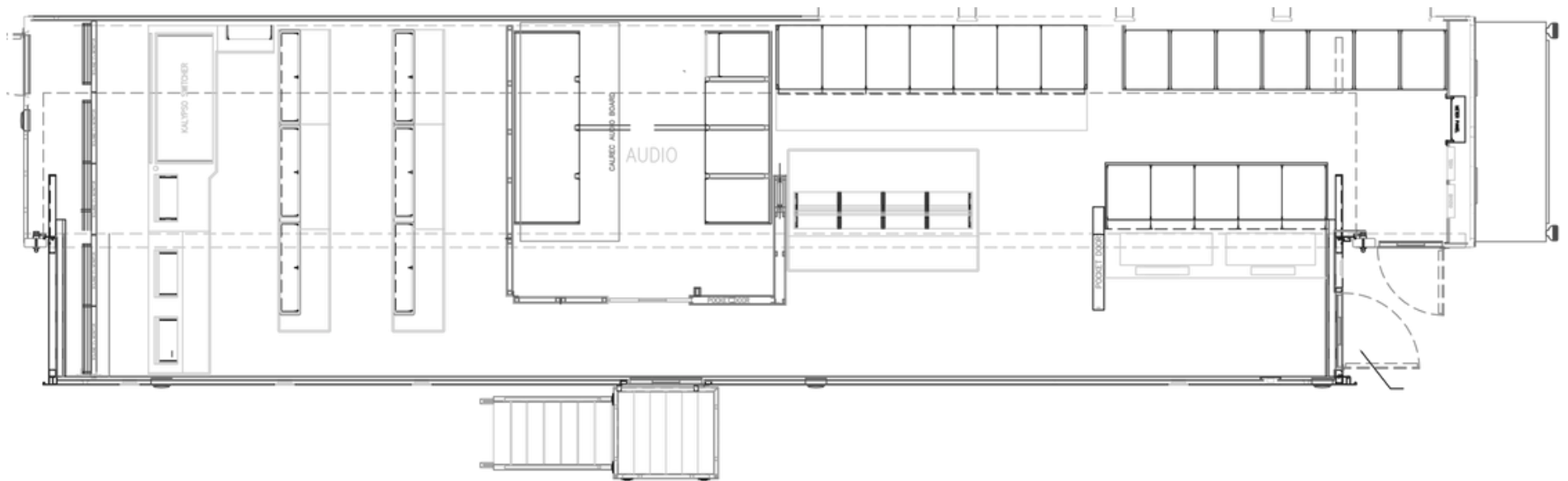
F&F PRODUCTIONS, LLC

14333 Myerlake Circle | Clearwater, FL 33760 | (727) 530-5000 | info@fandfhd.tv

GTX-14 Technical Specifications



GTX-14 Technical Specifications



F&F PRODUCTIONS, LLC

14333 Myerlake Circle | Clearwater, FL 33760 | (727) 530-5000 | info@fandfhd.tv