

## GTX-12 Technical Specifications

### Video Production

#### **Grass Valley HD Kayenne Elite K Frame Switcher**

96 Inputs / 48 Outputs / 4.5 Mix Effects

(6) Downstream Keyers per M/E

FlexiKey Programmable Clean Feed

12 iDPM / 4 eDPM / 4 Chroma Keys per Full M/E

DoubleTake

#### **Grass Valley K2 Summit 4-Channel Clip Store**

#### **Grass Valley Jupiter Grass Valley Trinix 256x256**

HD/SDI Router

32 GB Still Store

(1) EVS XT2+ Spot Box w/ Interface & Lance Controller

### Record/Replay

(3) EVS XT2+ 6-Channel LSM

(1) EVS XT2+ 4-Channel LSM

(2) DNF Slow Motion Controllers

(1) EVS X-File 3 Archive Station

(1) EVS Sports Net2 Hub

(2) Panasonic AJ-HD1700 DVCPPro

(1) Ikegami GF-Cam Deck

(4) DVD SD Recorder/Players

*\*Upon Request EVS IP Director Package*

### Graphics

Chyron HyperX3 w/ Keyboard

### Cameras & Accessories

(12) Ikegami HDK-79EC2 HD Native Multi-Format CMOS Cameras w/ 4 Star Filters, Fixed or

Variable Speed

Shutter (1/60 to 1/2000)

(7) Sony HDLA Lens Adapter

(7) Ikegami Super Expanders w/VFL 900 LCD

Color Viewfinders

(7) Vinten VECTOR 700 Panhead & Heavy Duty Tripods

(3) Vinten Dolly Wheels for Hard Cameras

(2) Studio Build-Up Kits for Handheld Cameras

(1) Ikegami HDS-V10 GFCAM ENG Camera

(1) Ikegami HDL-40 POV CMOS Camera

(4) Fujinon 101x8.9 Studio/Field w/stabilization

(3) Fujinon 87x9.3 Studio/Field w/stabilization

(4) Fujinon 22x7.8 ENG/EFP Handheld Lenses

(2) Fujinon 13X4.5 ENG/EFP Wide Angle Lenses

*Mobile Unit Wired For 16 Cameras*

### Microphones/Speakers

(8) Sennheiser ME 67MP Shotgun Mics

(5) Sennheiser MKH 416-P48 10" Shotgun Mics

(1) Sennheiser MKE 44-P Stereo Mic

(5) Sennheiser MD 46 Mics

(2) Sennheiser MKH 70 Mics

(6) Electro-Voice 635A Stick Mics

(7) Sony ECM 77B Lavalier Mics

(6) Fostex 6301N Throwdown Speakers

### Production Monitor Wall

#### **Evertz VIP Routing & Multi-Image Display**

(15) 32" HD LCD Monitors 16:9

(3) 37" HD LCD Monitors 16:9

(3) 42" HD LCD Monitors 16:9

### External Monitors/Converters

(8) 12" HD LCD Field Monitors 16:9

(3) 20" HD LCD Field Monitors 16:9

(2) 25" HD LCD Field Monitors 16:9

(6) Rattlers - ST Fiber to HD/SDI

(4) HD/SDI to HDMI Converter

### System/Routers

Evertz Master Timecode Generator

Black Magic 72x72 Router CM-3000 Control System

Grass Valley Concerto 224x224 Stereo Router

96x96 AES Audio

128x128 Analog Audio

(24) Benchmark Stereo Analog DA's

(8) Benchmark 4-Channel AES DA's

(2) Cobalt HD Color Corrector

(5) ForA 5-Channel HD Color Correctors/Frame Sync

(6) AJA FS1 Frame Synchronizer/Converter

(5) AJA FS2 Frame Synchronizer/Converter

(16) AJA SDI-HD Up Converter/Frame Sync

(90) AJA HD-SDI Down Converter

(1) DSS Receiver

QAM Digital Demodulator

(2) Evertz 16-Channel Embedders

**F&F PRODUCTIONS, LLC**

14333 Myerlake Circle | Clearwater, FL 33760 | (727) 530-5000 | info@fandfhd.tv

## GTX-12 Technical Specifications

### Intercom/Communications

- RTS Adam 112x112 Matrix  
(10) RTS KP 32 Keypanel  
(9) RTS KP 12 Keypanel  
(16) IFB Channels  
(24) RTS BP-325 Dual Channel Programmable  
**Beltpack**  
(15) RTS 4030 IFB Beltpack  
(4) RTS TIF 2000 Digital Telephone Interface  
(1) Phone System (12 Lines)  
(3) QKT  
(4) Ringdown Circuits  
(6) Motorola 2-Way Radios w/ 2 Base Stations  
(20) Single Muff Headsets  
(14) Double Muff Headsets  
(20) Lightweight Headsets  
(6) Sennheiser HMD-25 Announcer Headsets  
(6) Daltech Talkback Boxes  
(2) RTS Telex SPK 300

### Fiber Booth Kit

- Telecast Adder II**  
(64) Configurable Audio Channels  
(4) Data Channels (Bi-directional 4 x 16)  
**Telecast Viper II**  
(6) HD/SDI  
(1) Analog NTSC

### Audio

- Calrec Artemis Beam Digital Console V8 w/High  
Density Blue Fin2  
(56) Faders w/ Hydra2  
LCD Bar Graph and VU Metering  
MADI Interface – 2-Streams  
64x64 AES Audio  
Dual Processor Engines  
**Yamaha SPX2000 Multi-Effects Processor**  
(2) Rane Audio Delays  
(3) dbx 166 XL Compressors  
(1) dbx 1046 Quad Compressors  
(2) 360 Systems DigiCart II w/ ZipDrives  
(1) CD Player  
(10) AES DA  
(1) DTS Neural Loudness Meter  
(2) DTS Neural Upmix Decoders  
(2) DTS Neural Downmix Encoders  
(2) DTS Neural Mono to Stereo 4-Channel  
Synthesizers  
Genelec 5.1 Surround Sound Monitoring  
DK Stereo Surround Audio Display  
*\*Upon Request 96 Channel Hydra Stage Box*

### Lighting

- (2) Lowell Light Kits w/ 4 Instruments each

### Cable

- 5000' Triax  
3000' DT 12 Audio Mults  
2000' Coax Video (Various Lengths)  
2500' Single Audio (Various Lengths)  
5-Pair Coax Mults (Various Lengths)  
10-Pair Coax Mults (Various Lengths)

### Power Requirements

- 3-Phase  
208 Volt  
400 Amps  
200 Amp Environmental  
200 Amp Technical  
**Maximum Distance From Power Panel: 150'**

### Dimensions (Expanded)

- W/ Tractor: 74' L x 13'6" H x 13'5" W  
W/O Tractor: 56' L x 13'6" H x 13'5" W  
Working Footprint: +5' Around  
Expands: Curb Side

### B-Unit (Optional Upon Request)

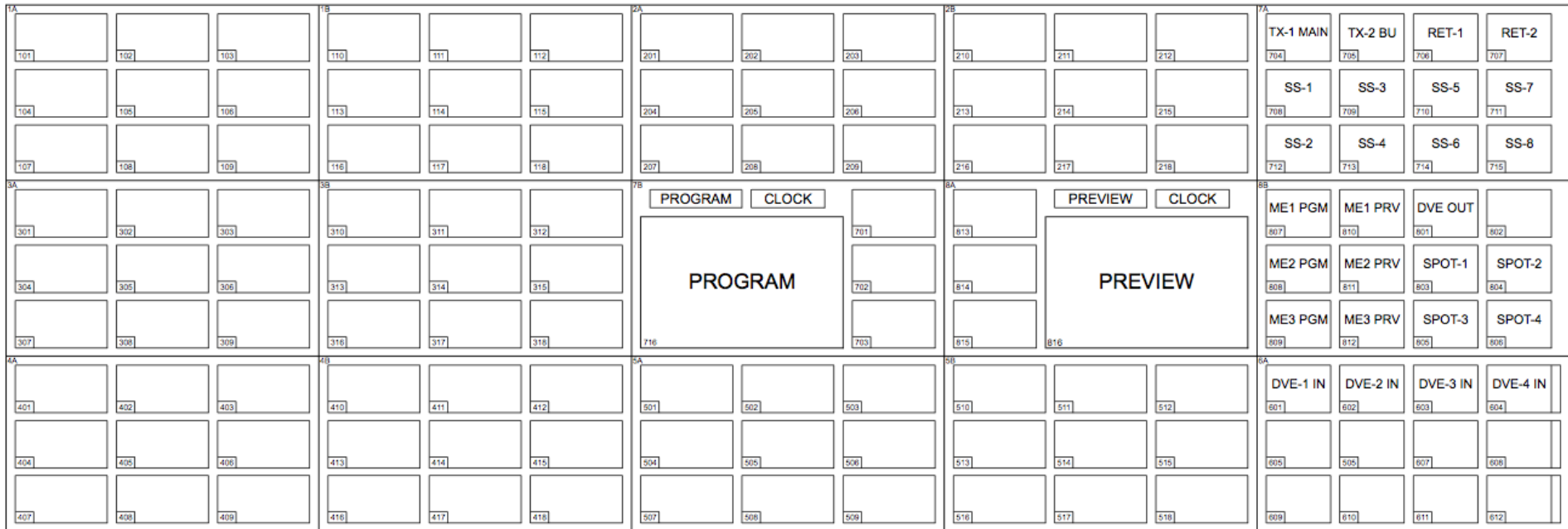
- W/ Tractor: 71' L x 13'6" H x 8'6" W  
W/O Tractor: 53' L x 13'6" H x 8'6" W  
Working Footprint: +5' Around

*\*Upon Request  
Closed Captioning Device  
Telestrator*

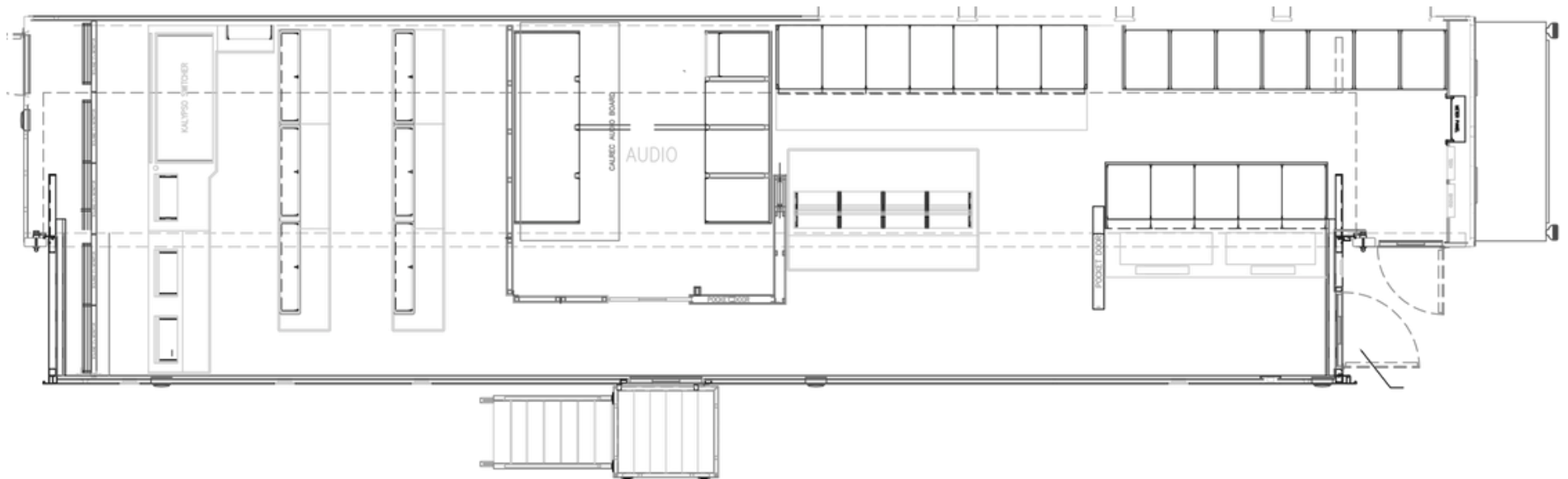
**F&F PRODUCTIONS, LLC**

14333 Myerlake Circle | Clearwater, FL 33760 | (727) 530-5000 | info@fandfhd.tv

# GTX-12 Technical Specifications



# GTX-12 Technical Specifications



**F&F PRODUCTIONS, LLC**

14333 Myerlake Circle | Clearwater, FL 33760 | (727) 530-5000 | [info@fandfhd.tv](mailto:info@fandfhd.tv)