

GTX-11 Technical Specifications

Video Production

Grass Valley HD Kayenne Classic Switcher

96 Inputs / 48 Outputs / 4.5 Mix Effects

(6) Downstream Keyers per M/E

FlexiKey Programmable Clean Feed

12 iDPM / 4 eDPM / 4 Chroma Keys per Full M/E

DoubleTake

Grass Valley K2 Summit 4-Channel Clip Store

Grass Valley Jupiter Grass Valley Trinix 256x256

HD/SDI Router

32 GB Still Store

(1) EVS XT2+ 4 channel Spot Box w/ Interface & Lance Controller

Record/Replay

(3) EVS XT2+ 6-Channel LSM

(1) EVS XT2+ 4 Channel RO

(2) DNF Slow Motion Controllers

(1) EVS X-File 3 Archive Station

(1) EVS Sports Net3 Hub

(1) CISCO 10 Gig Router

(1) Panasonic AJ-HD1700 DVCPPro

(1) Sony DVW-A500 Digital Betacam

(4) DVD SD Recorder/Players

**Upon Request EVS IP Director Package*

Graphics

Chyron HyperX3 w/ Keyboard

Cameras & Accessories

(12) Sony HDC 1500 Multi-Format Camera

(7) Sony HDLA Lens Adapters

(12) HDFX/TX Triax to SMPTE Converters

(7) Vinten VECTOR 700 Panhead & Heavy Duty Tripods

(3) Vinten Dolly Wheels for Hard Cameras

(2) Studio Build-Up Kits for Handheld Cameras

(1) Panasonic Varicam ENG Camera (DVCPPro 720p)

(4) Fujinon 101x8.9 Studio/Field w/stabilization

(3) Fujinon 87x9.3 Studio/Field w/stabilization

(3) Fujinon 22x7.8 ENG/EFP Handheld Lenses

(2) Fujinon 13X4.5 ENG/EFP Wide Angle Lenses

Mobile Unit Wired For 18 Cameras

Microphones/Speakers

(8) Sennheiser ME 67MP Shotgun Mics

(5) Sennheiser MKH 416-P48 10" Shotgun Mics

(1) Sennheiser MKE 44-P Stereo Mic

(5) Sennheiser MD 46 Mics

(2) Sennheiser MKH 70 Mics

(6) Electro-Voice 635A Stick Mics

(5) Sony ECM 55B Lavalier Mics

(2) Fostex 6301N Throwdown Speakers

Production Monitor Wall

Evertz VIP Routing & Multi-Image Display

(15) 32" HD LCD Monitors 16:9

External Monitors/Converters

(4) 13" HD LCD Field Monitors 16:9

(2) 19" HD LCD Field Monitors 16:9

(4) 20" HD LCD Field Monitors 16:9

(5) Rattlers - ST Fiber to HD/SDI

(4) HD/SDI to HDMI Converter

System/Routers

Evertz Master Timecode Generator

Grass Valley Jupiter CM-3000 Control System

Grass Valley Concerto 192x192 Stereo Router

64x64 AES Audio

128x128 Analog Audio

(24) Benchmark Stereo Analog DA's

(8) Benchmark 4-Channel AES DA's

(40) Cobalt 9003 Dual 3G HD DA

(5) AJA FS1 Frame Synchronizer/Converter

(5) AJA FS2 Frame Synchronizer/Converter

(22) AJA SDI-HD Up Converter/Frame Sync

(80) AJA HD-SDI Down Converter

(1) DSS Receiver

QAM Digital Demodulator

(2) Evertz 16-Channel Embedders

GTX-11 Technical Specifications

Intercom/Communications

- RTS Adam 112x112 Matrix
- (13) RTS KP 32 Keypanel
- (8) RTS KP 12 Keypanel
- (16) IFB Channels
- (20) RTS BP-325 Dual Channel Programmable Beltpack
- (15) RTS 4030 IFB Beltpack
- RTS 4010 IFB Station
- (4) RTS TIF 951 Digital Telephone Interface
- (1) Phone System (12 Lines)
- (3) QKT
- (4) Ringdown Circuits
- (6) Motorola 2-Way Radios w/ 2 Base Stations
- (15) Single Muff Headsets
- (7) Double Muff Headsets
- (20) Lightweight Headsets
- (6) Sennheiser HMD-25 Announcer Headsets
- (6) Daltech Talkback Boxes
- (2) RTS Telex SPK 300

Fiber Booth Kit

- Telecast Adder II
- (64) Configurable Audio Channels
- (4) Data Channels (Bi-directional 4 x 16)
- Telecast Viper
- (6) HD/SDI
- (1) Analog NTSC

Audio

- Calrec Artemis Beam Digital Console V8 w/High Density Blue Fin2
- (56) Faders w/ Hydra2
- LCD Bar Graph and VU Metering
- MADI Interface – 2-Streams
- 128x128 AES Audio
- 128x128 AES Audio
- Dual Processor Engines
- Yamaha SPX2000 Multi-Effects Processor
- (2) Rane Audio Delays
- (3) dbx 166 XL Compressors
- (1) dbx 1046 Quad Compressors
- (2) 360 Systems DigiCart II w/ ZipDrives
- (1) CD Player
- (1) DTS Neural Loudness Meter
- (2) DTS Neural Upmix Decoders
- (2) DTS Neural Downmix Encoders
- (2) DTS Neural Mono to Stereo 4-Channel Synthesizers
- Genelec 5.1 Surround Sound Monitoring
- DK Stereo Surround Audio Display
- *Upon Request 96 Channel Hydra Stage Box*

Lighting

- (2) Lowell Light Kits w/ 4 Instruments each

Cable

- 5000' Triax
- 3000' DT 12 Audio Mults
- 2000' Coax Video (Various Lengths)
- 2500' Single Audio (Various Lengths)
- 5-Pair Coax Mults (Various Lengths)
- 10-Pair Coax Mults (Various Lengths)

Power Requirements

- 3-Phase
- 208 Volt
- 400 Amps
- 200 Amp Environmental
- 200 Amp Technical
- Maximum Distance From Power Panel: 150'

Dimensions (Expanded)

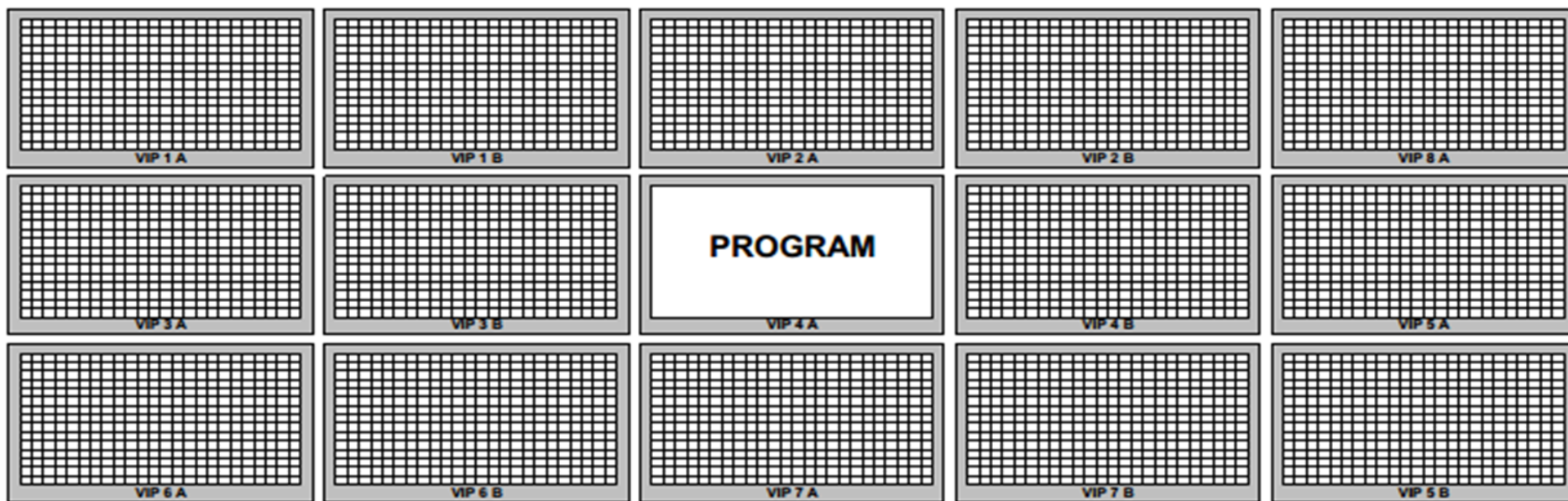
- W/ Tractor: 74' L x 13'6" H x 13'5" W
- W/O Tractor: 56' L x 13'6" H x 13'5" W
- Working Footprint: +5' Around
- Expands: Curb Side

B-Unit (Optional Upon Request)

- W/ Tractor: 71' L x 13'6" H x 8'6" W
- W/O Tractor: 53' L x 13'6" H x 8'6" W
- Working Footprint: +5' Around

**Upon Request
Closed Captioning Device
Telestrator*

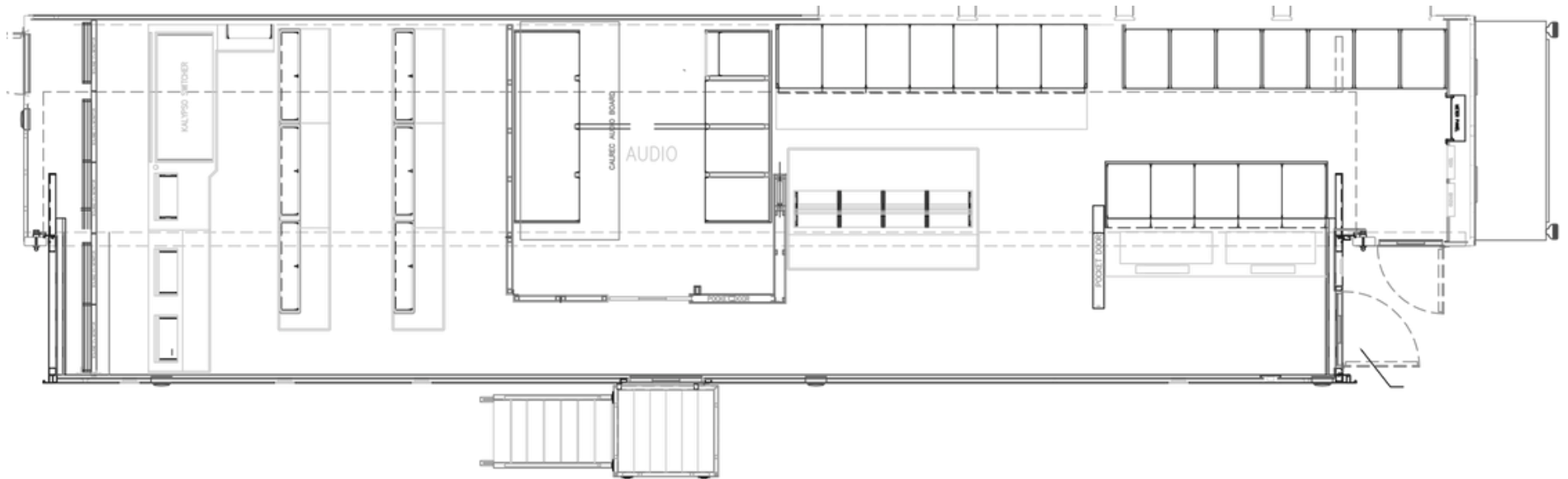
GTX-11 Technical Specifications



F&F PRODUCTIONS, LLC

14333 Myerlake Circle | Clearwater, FL 33760 | (727) 530-5000 | info@fandfhd.tv

GTX-11 Technical Specifications



F&F PRODUCTIONS, LLC

14333 Myerlake Circle | Clearwater, FL 33760 | (727) 530-5000 | info@fandfhd.tv